

## GWST-AT Anti-Turn Head Threaded Insert

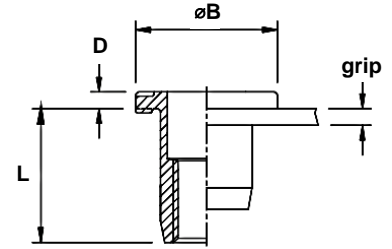
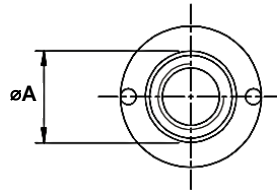
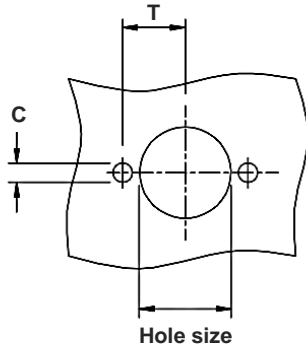
Steel · Large flange · Open end · Anti-turn head  
M6 - M10

### Features

- Special anti-rotation head and round shank to reach a torque-to-turn value at least twice as high as that of the equivalent round blind rivet nut
- Suitable for all applications, in particular for applications where hexagonal holes are not allowed or difficult to make

### Material

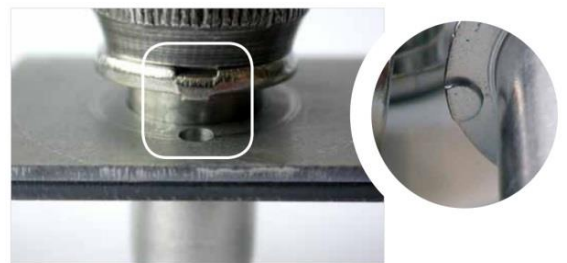
- Steel, zinc plated



Part No.	Thread Size	Grip Range		Hole Size	øA	øB	D	L	C	T
		min.	max.							
GWST-ATM6-0530	M6	0.5	3.0	9.0	9.0	14.0	±0.15	±0.35	-	-
GWST-ATM8-0530	M8	0.5	3.0	11.0	11.0	17.0	±0.15	±0.35	-	-
GWST-ATM10-0835	M10	0.8	3.5	13.0	13.0	19.0	±0.15	±0.35	-	-

### Tool to position øA:

M6	GAT-206
M8	GAT-208
M10	GAT-210



### Can't find what you are looking for?

We can provide unique and customized solutions.  
Contact your nearest [Gripwell](#) team for assistance!